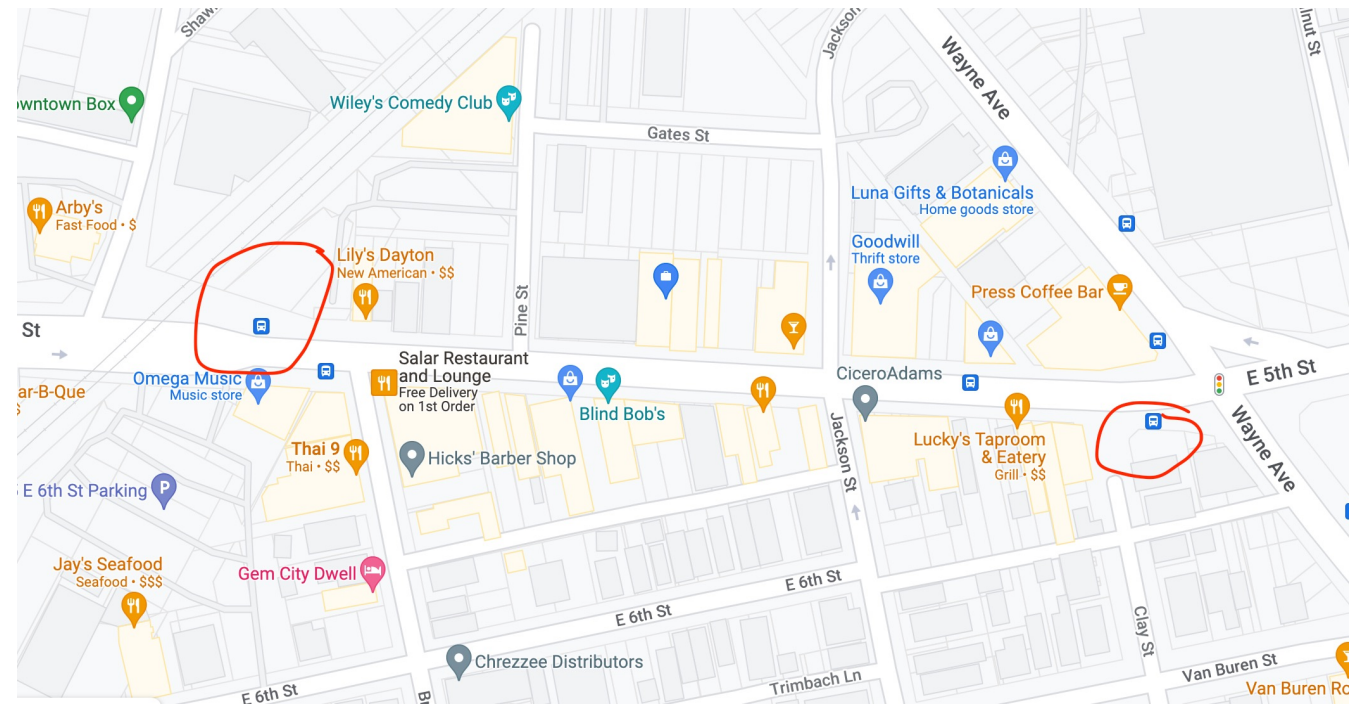


8.4 Memorial Committee

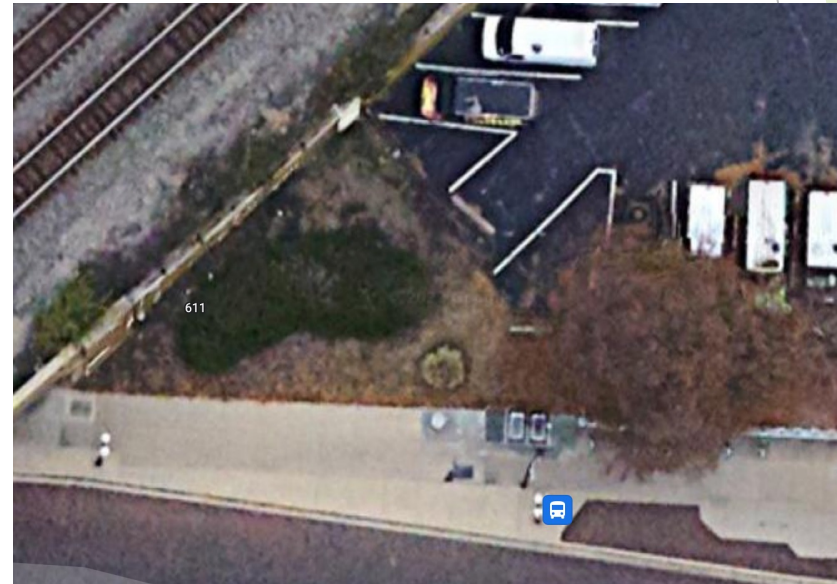
Location Subcommittee Report

2/28/22

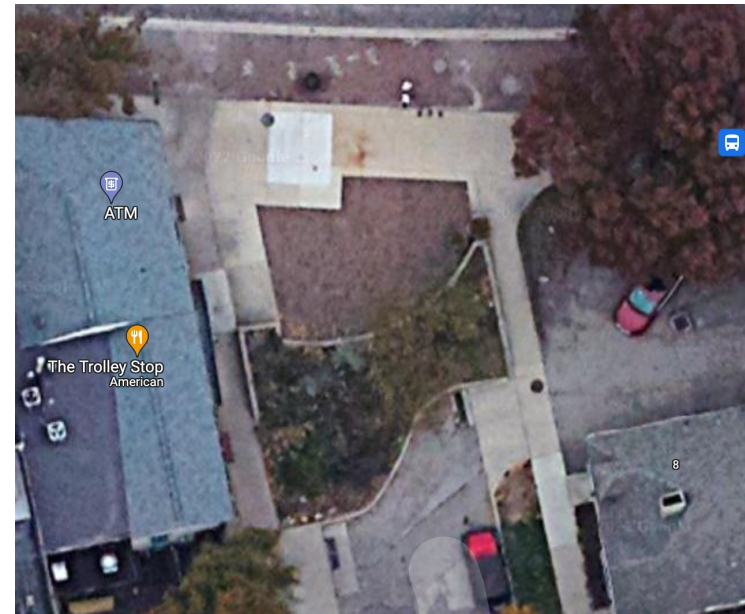
Two possible locations:
one at each
end of Fifth
Street



Option 1: West End near Mural



Option 1: East End Trolley Plaza



Option 1: West End Assets and Challenges

▶ Assets

- ▶ Currently unused
- ▶ Out of the way of traffic
- ▶ Not likely to need movement of utilities
- ▶ Possible space for mural on rail wall
- ▶ Provides “tucked away” space for reflection without being too front and center for district members still wrestling with events

▶ Challenges

- ▶ City would need to take ownership of space
- ▶ Intermittent noise from railroad
- ▶ Possible railroad easements
- ▶ While we could paint wall, won't be able to maintain guardrails or trees at top of structure

Option 2: Trolley Plaza Assets and Challenges

▶ Assets

- ▶ City owns the space
- ▶ Gateway between biz district and neighborhood
- ▶ No easement issues

▶ Challenges

- ▶ Utilities would need to be rerouted
- ▶ Space is already activated and is quite busy during summer evenings
- ▶ Very public location, making reflection space difficult
- ▶ May be difficult on district members to have memorial so front and center in their space
- ▶ Intermittent traffic noise

Recommendation: West End near Mural

- ▶ Assuming city can secure deed, the location subcommittee felt that this provided the best opportunity for a dedicated space that is out of the way of day-to-day traffic and provides an opportunity for transformation of the space.
- ▶ While the rail noise is distracting, committee members were able to hold conversation while trains passed.
- ▶ While top portion of the wall is problematic, the committee felt that a mural or other artwork in the area could draw the eye away from the top of the wall, much in the way the mural behind Smokin' BBQ does.